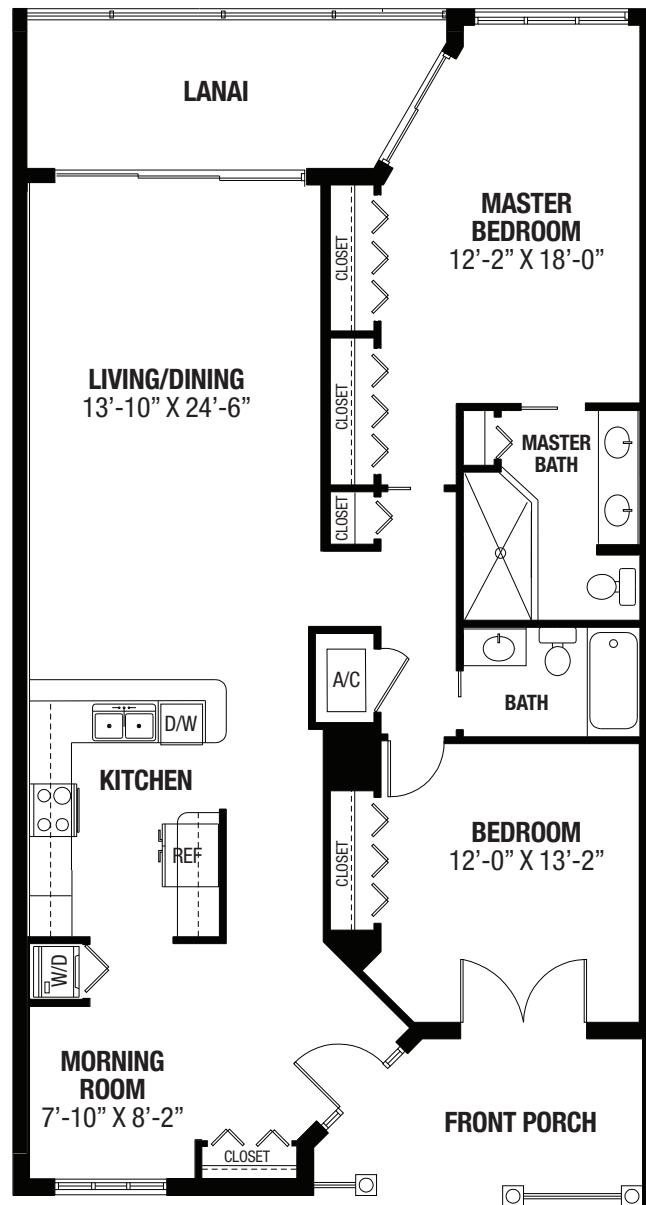


Sundial Residences



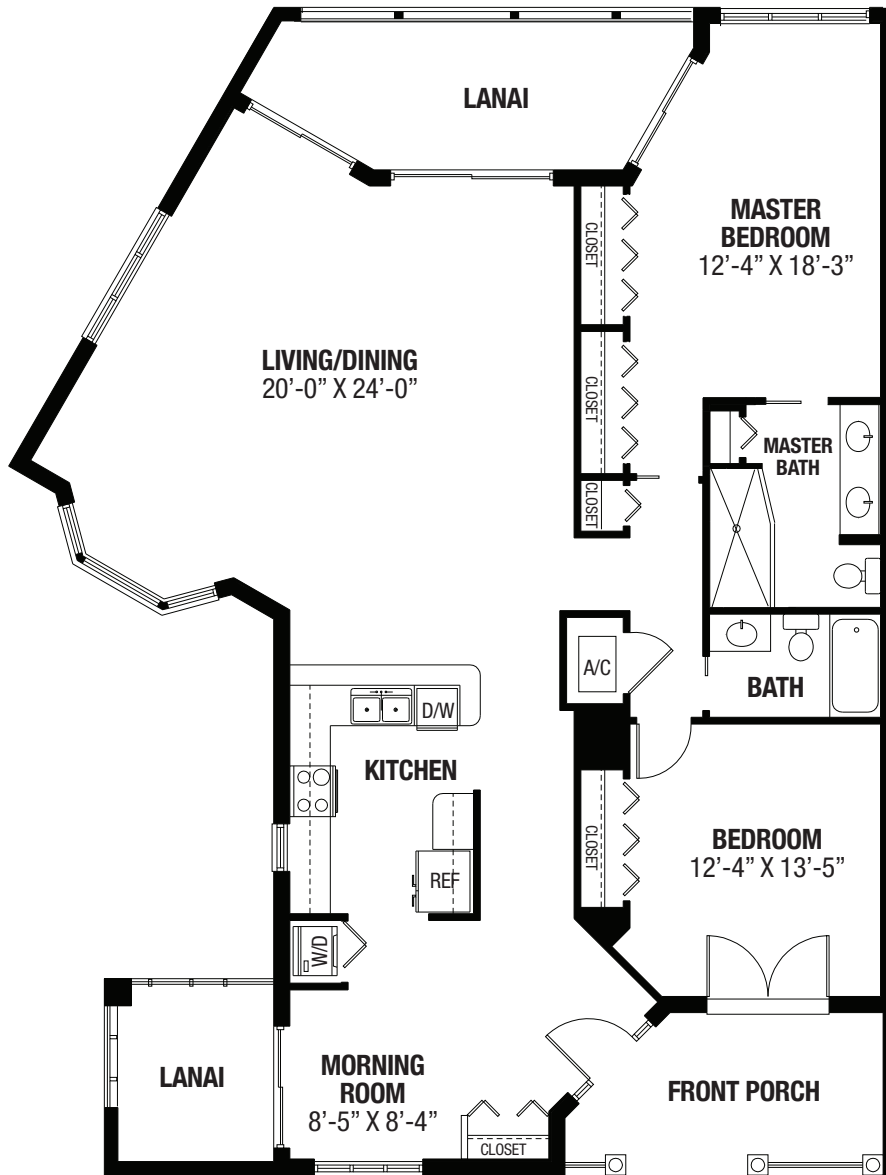


2 Bed/2 Bath Traditional

1,380 square feet excluding lanai

CONTRACTS	ENTRANCE FEE	MONTHLY FEE
A Standard Lifecare Second Person Fee:	\$345,000 to \$414,000 \$13,000	\$3,362 \$721
Standard Lifecare + 75% Refund. Second Person Fee:	\$545,100 to \$654,120 \$20,540	\$3,362 \$721
B Modified Lifecare Second Person Fee:	\$293,250 to \$351,900 \$11,050	\$2,858 \$613
C 100% Refundable Second Person Fee:	\$345,000 to \$414,000 \$13,000	\$3,362 \$721

Dimensions are approximate and floorplans may vary. Additional fees apply to residences that include glass enclosures with increased under-air square footage.

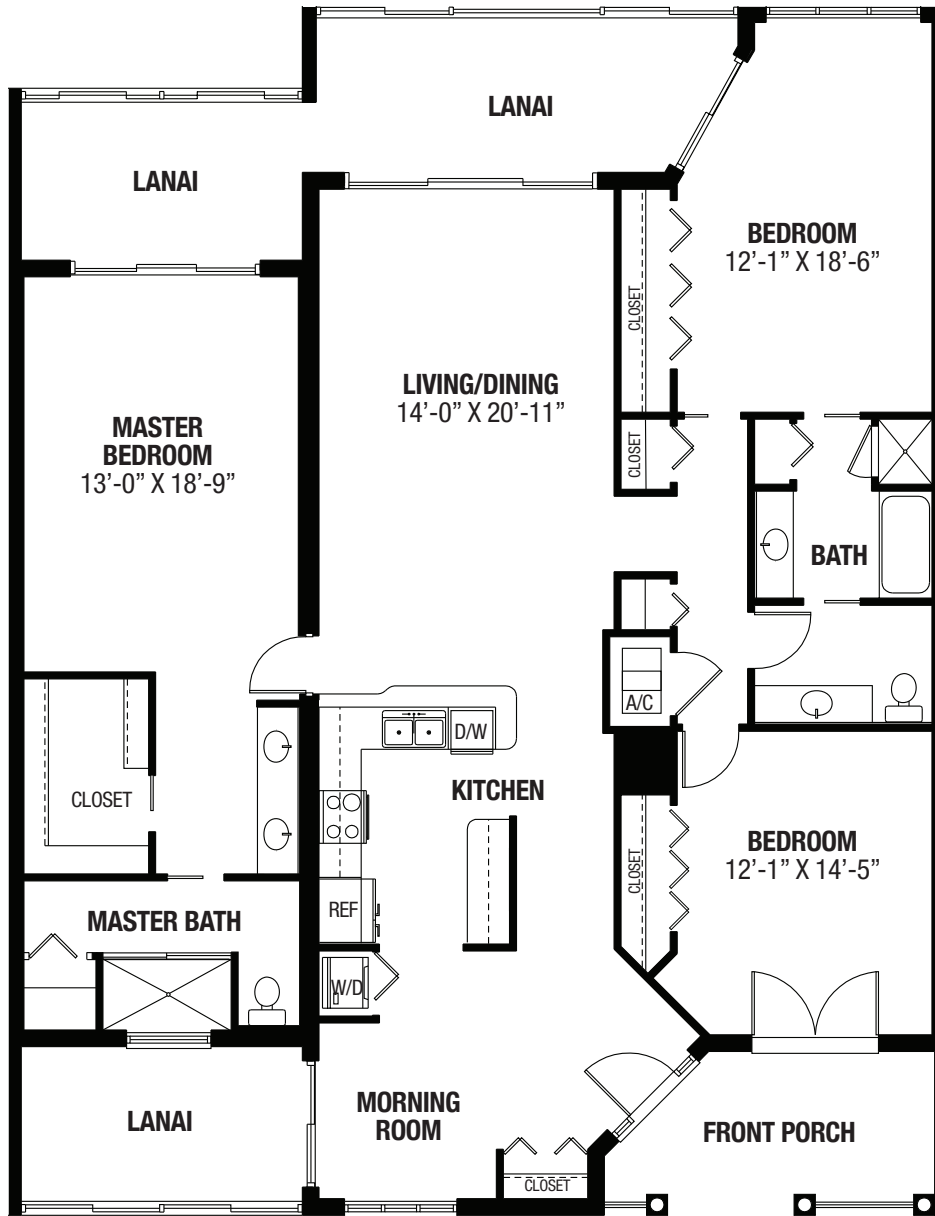


2 Bed/2 Bath Executive

1,600 square feet excluding lanai

CONTRACTS	ENTRANCE FEE	MONTHLY FEE
A Standard Lifecare Second Person Fee:	\$386,000 to \$443,000 \$13,000	\$3,966 \$721
Standard Lifecare + 75% Refund. Second Person Fee:	\$609,880 to \$699,940 \$20,540	\$3,966 \$721
B Modified Lifecare Second Person Fee:	\$328,100 to \$376,550 \$11,050	\$3,372 \$613
C 100% Refundable Second Person Fee:	\$386,000 to \$443,000 \$13,000	\$3,966 \$721

Dimensions are approximate and floorplans may vary. Additional fees apply to residences that include glass enclosures with increased under-air square footage.

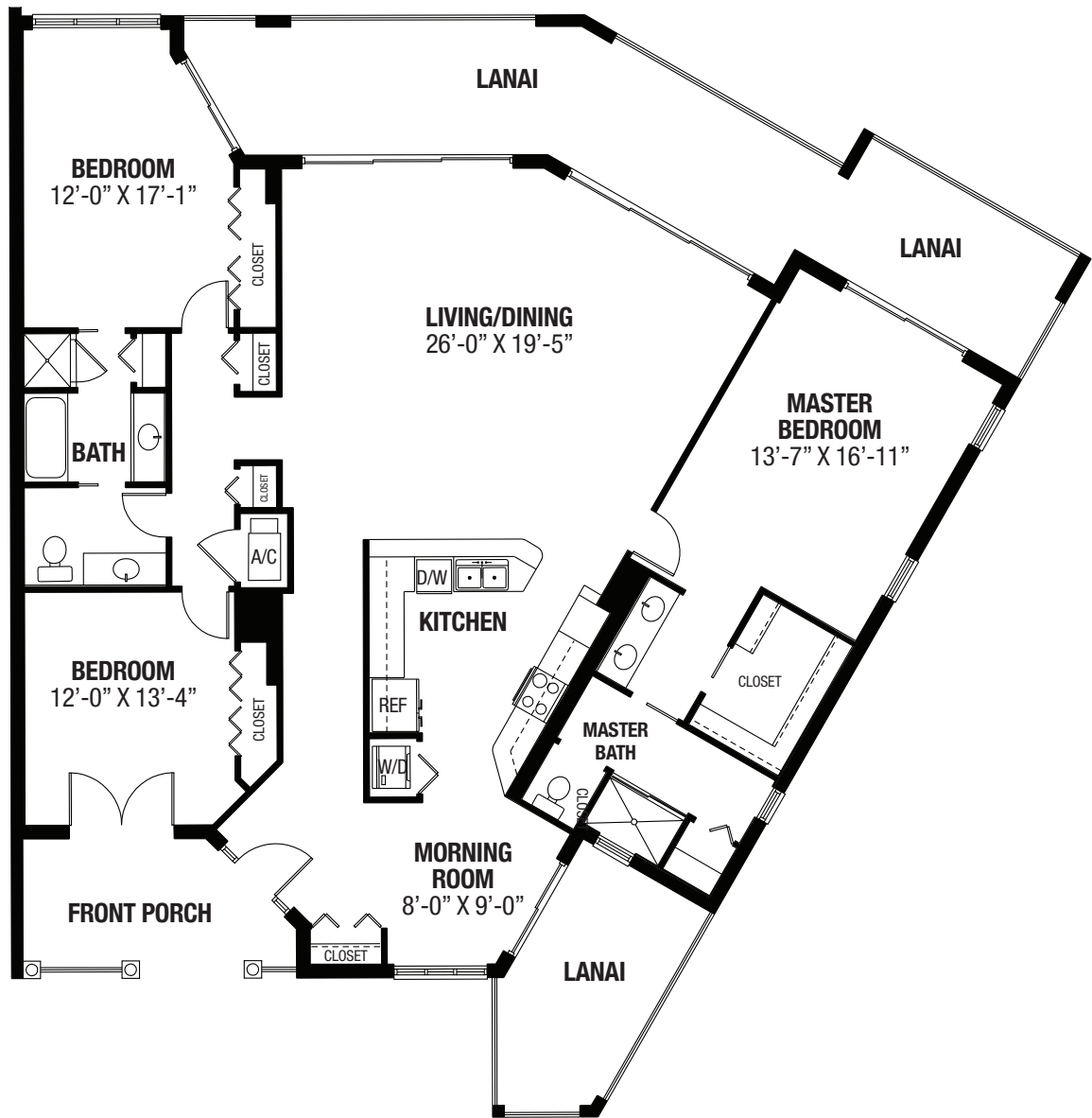


3 Bed/2 Bath Traditional

1,855 square feet excluding lanai

CONTRACTS	ENTRANCE FEE	MONTHLY FEE
A Standard Lifecare Second Person Fee:	\$437,000 to \$527,000 \$13,000	\$4,657 \$721
Standard Lifecare+75% Refund. Second Person Fee:	\$690,460 to \$832,660 \$20,540	\$4,657 \$721
B Modified Lifecare Second Person Fee:	\$371,450 to \$447,950 \$11,050	\$3,959 \$613
C 100% Refundable Second Person Fee:	\$437,000 to \$527,000 \$13,000	\$4,657 \$721

Dimensions are approximate and floorplans may vary. Additional fees apply to residences that include glass enclosures with increased under-air square footage.



3 Bed/2 Bath Executive

1,945 square feet excluding lanai

CONTRACTS	ENTRANCE FEE	MONTHLY FEE
A Standard Lifecare Second Person Fee:	\$522,000 to \$584,000 \$13,000	\$4,905 \$721
Standard Lifecare + 75% Refund. Second Person Fee:	\$824,760 to \$922,720 \$20,540	\$4,905 \$721
B Modified Lifecare Second Person Fee:	\$443,700 to \$496,400 \$11,050	\$4,170 \$613
C 100% Refundable Second Person Fee:	\$522,000 to \$584,000 \$13,000	\$4,905 \$721

Dimensions are approximate and floorplans may vary. Additional fees apply to residences that include glass enclosures with increased under-air square footage.