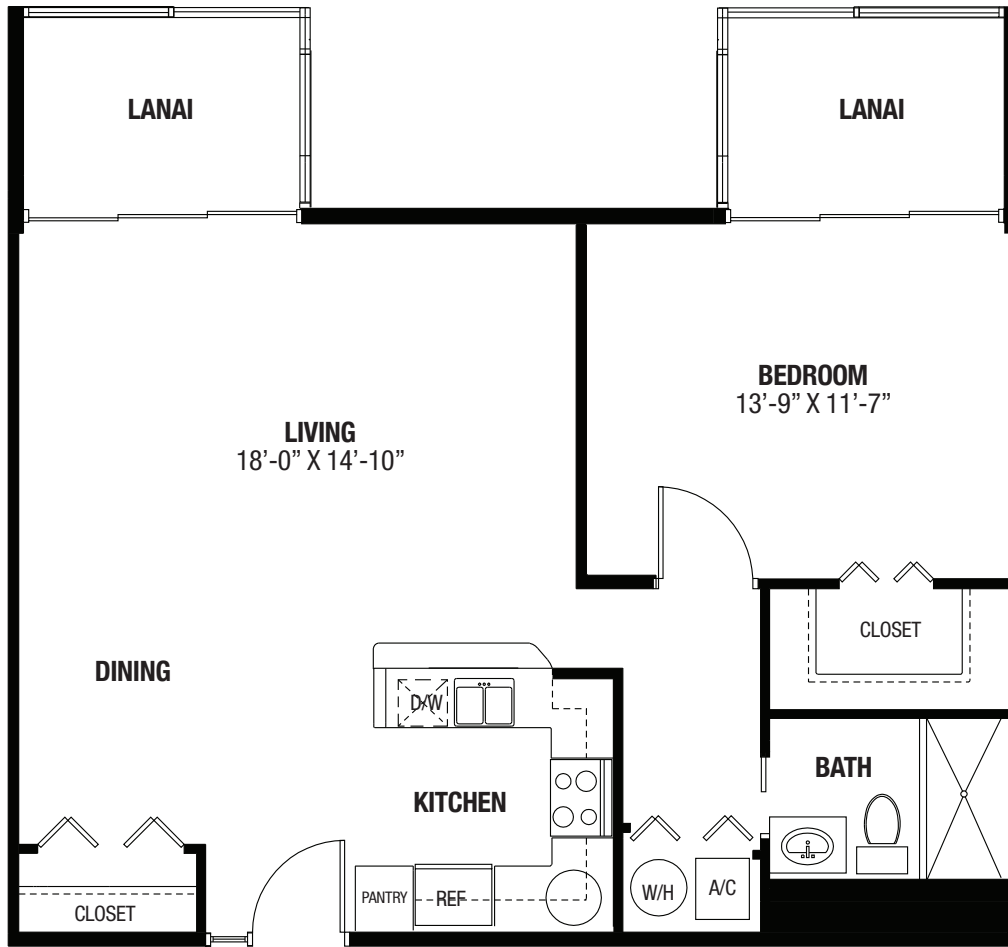


# Midrise Residences



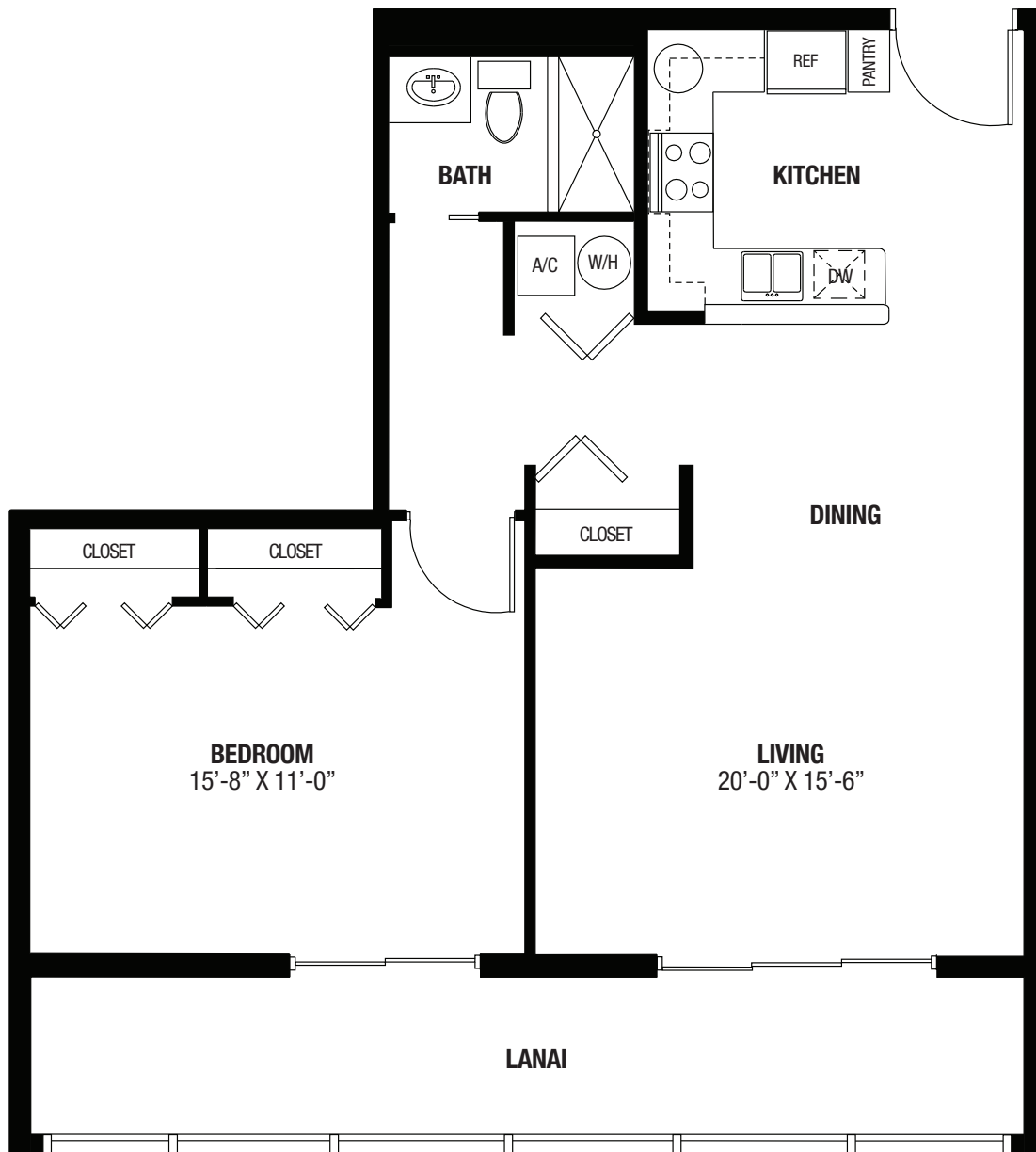


## Hutchinson, 1 Bed/1 Bath

759 square feet excluding lanai

CONTRACTS	ENTRANCE FEE	MONTHLY FEE
<b>A</b> Standard Lifecare Second Person Fee:	\$236,000 to \$313,000 \$13,000	\$1,861 \$721
Standard Lifecare+75% Refund. Second Person Fee:	\$372,880 to \$494,540 \$20,540	\$1,861 \$721
<b>B</b> Modified Lifecare Second Person Fee:	\$200,600 to \$266,050 \$11,050	\$1,582 \$613
<b>C</b> 100% Refundable Second Person Fee:	\$236,000 to \$313,000 \$13,000	\$1,861 \$721

*Dimensions are approximate and floorplans may vary. Additional fees apply to residences that include glass enclosures with increased under-air square footage.*

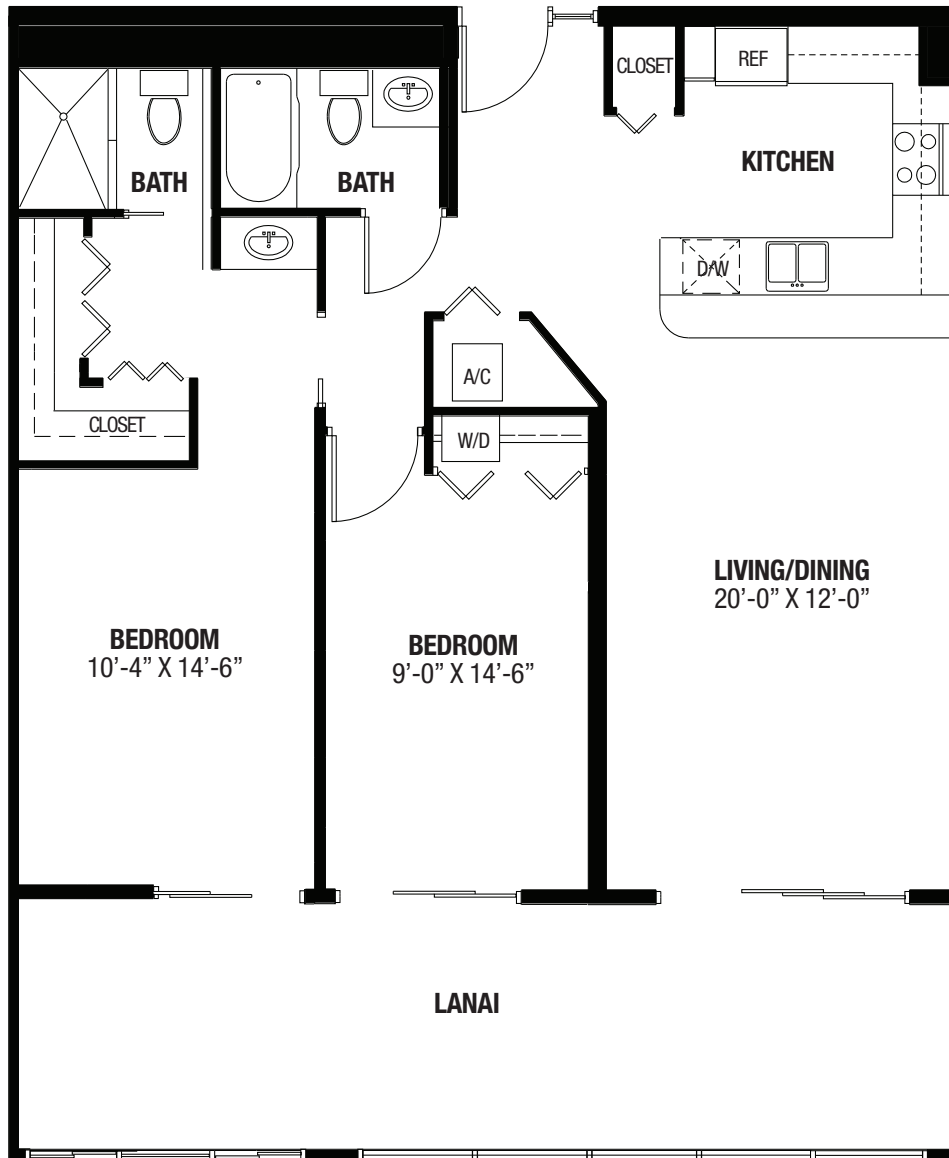


## Gasparilla, 1 Bed/1 Bath

815 square feet excluding lanai

CONTRACTS	ENTRANCE FEE	MONTHLY FEE
<b>A</b> Standard Lifecare Second Person Fee:	\$236,000 to \$313,000 \$13,000	\$1,861 \$721
Standard Lifecare + 75% Refund. Second Person Fee:	\$372,880 to \$494,540 \$20,540	\$1,861 \$721
<b>B</b> Modified Lifecare Second Person Fee:	\$200,600 to \$266,050 \$11,050	\$1,582 \$613
<b>C</b> 100% Refundable Second Person Fee:	\$236,000 to \$313,000 \$13,000	\$1,861 \$721

*Dimensions are approximate and floorplans may vary. Additional fees apply to residences that include glass enclosures with increased under-air square footage.*

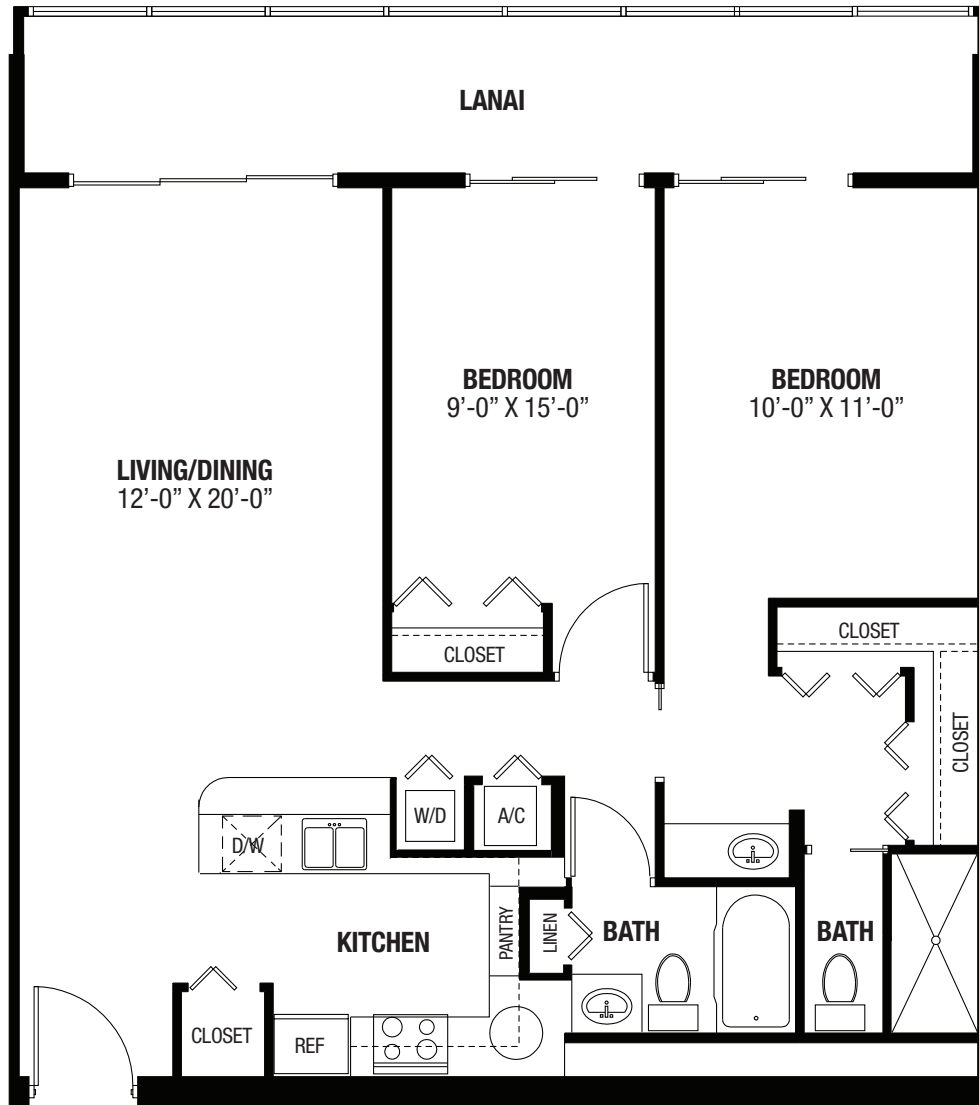


## Amelia, 2 Bed/2 Bath

1,001 square feet excluding lanai

CONTRACTS	ENTRANCE FEE	MONTHLY FEE
<b>A</b> Standard Lifecare Second Person Fee:	\$236,000 to \$365,000 \$13,000	\$2,345 \$721
Standard Lifecare + 75% Refund. Second Person Fee:	\$372,880 to \$576,700 \$20,540	\$2,345 \$721
<b>B</b> Modified Lifecare Second Person Fee:	\$200,600 to \$310,250 \$11,050	\$1,994 \$613
<b>C</b> 100% Refundable Second Person Fee:	\$236,000 to \$365,000 \$13,000	\$2,345 \$721

*Dimensions are approximate and floorplans may vary. Additional fees apply to residences that include glass enclosures with increased under-air square footage.*

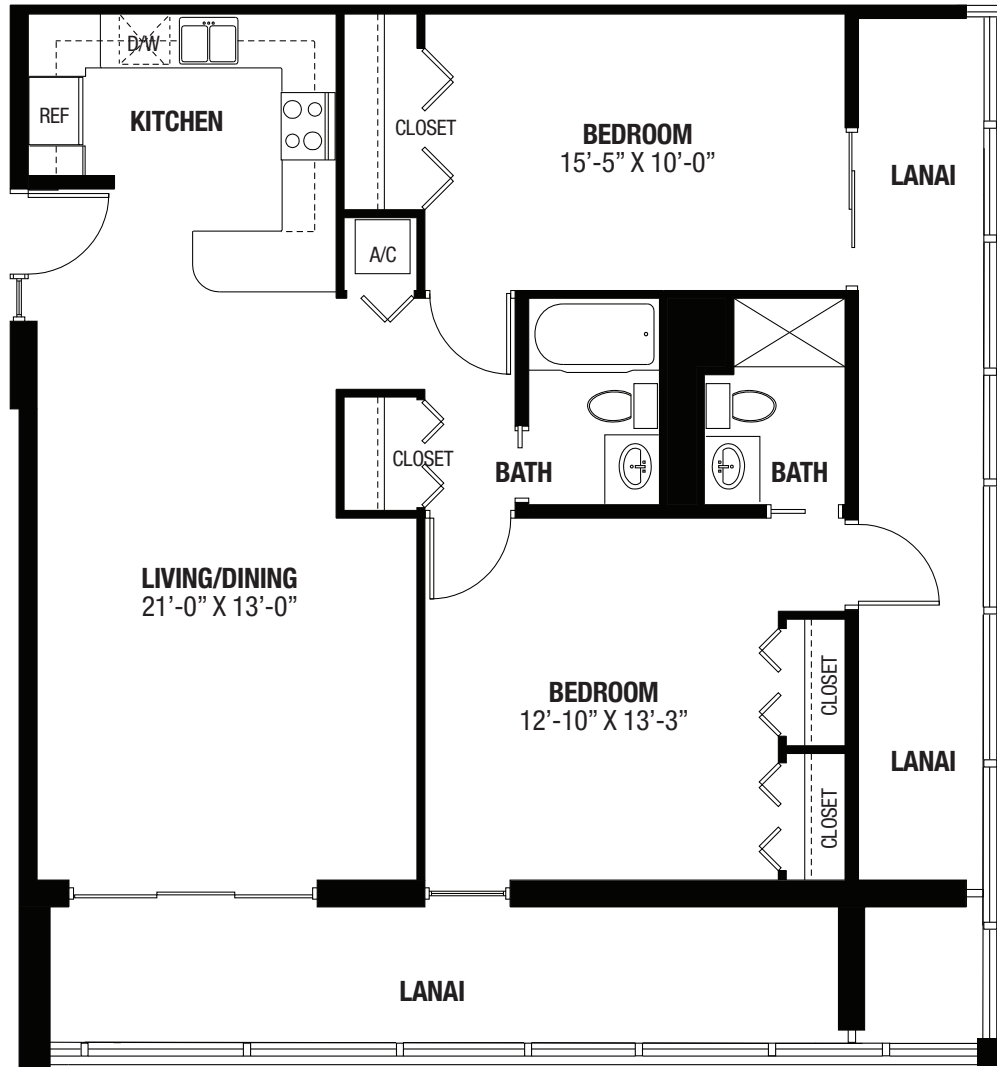


## Cayman, 2 Bed/2 Bath

1,001 square feet excluding lanai

CONTRACTS	ENTRANCE FEE	MONTHLY FEE
<b>A</b> Standard Lifecare Second Person Fee:	\$236,000 to \$365,000 \$13,000	\$2,345 \$721
Standard Lifecare + 75% Refund. Second Person Fee:	\$372,880 to \$576,700 \$20,540	\$2,345 \$721
<b>B</b> Modified Lifecare Second Person Fee:	\$200,600 to \$310,250 \$11,050	\$1,994 \$613
<b>C</b> 100% Refundable Second Person Fee:	\$236,000 to \$365,000 \$13,000	\$2,345 \$721

*Dimensions are approximate and floorplans may vary. Additional fees apply to residences that include glass enclosures with increased under-air square footage.*

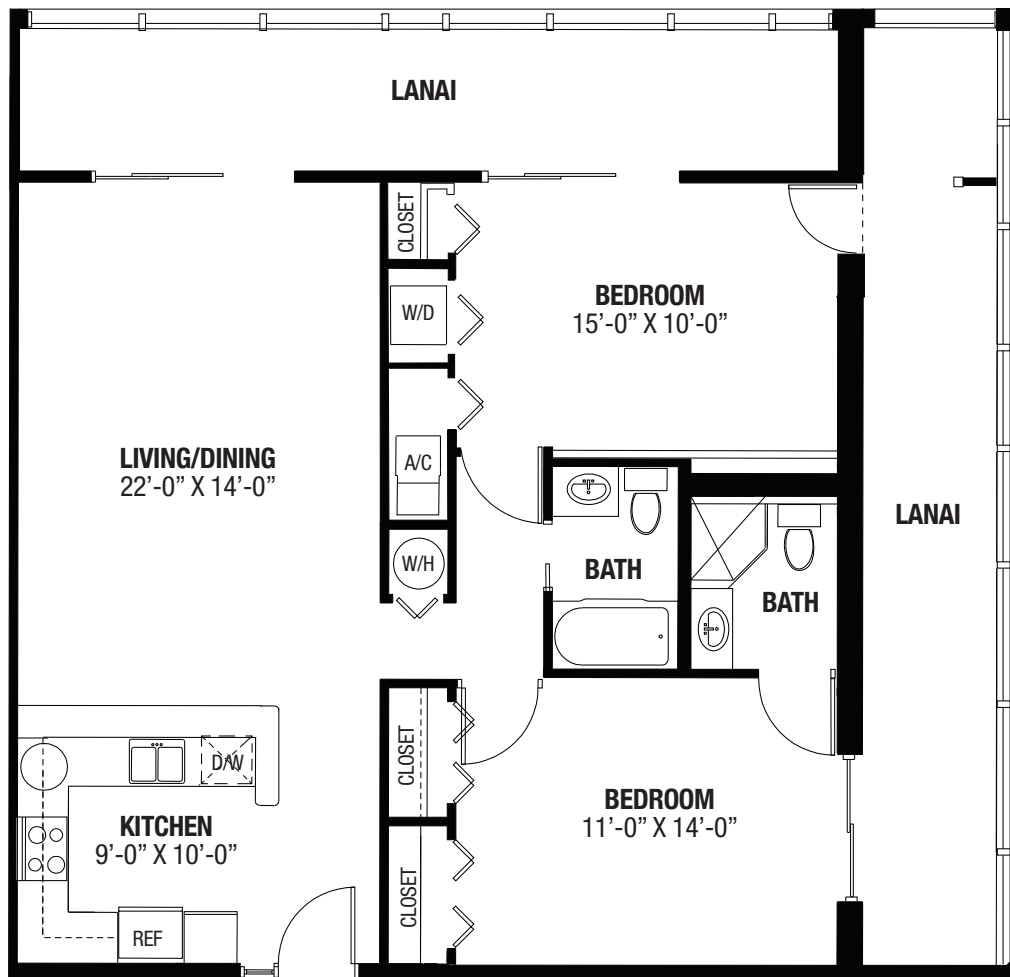


## Bimini, 2 Bed/2 Bath

1,001 square feet excluding lanai

CONTRACTS	ENTRANCE FEE	MONTHLY FEE
<b>A</b> Standard Lifecare Second Person Fee:	\$281,000 to \$399,000 \$13,000	\$2,757 \$721
Standard Lifecare + 75% Refund. Second Person Fee:	\$443,980 to \$630,420 \$20,540	\$2,757 \$721
<b>B</b> Modified Lifecare Second Person Fee:	\$238,850 to \$339,150 \$11,050	\$2,344 \$613
<b>C</b> 100% Refundable Second Person Fee:	\$281,000 to \$399,000 \$13,000	\$2,757 \$721

*Dimensions are approximate and floorplans may vary. Additional fees apply to residences that include glass enclosures with increased under-air square footage.*

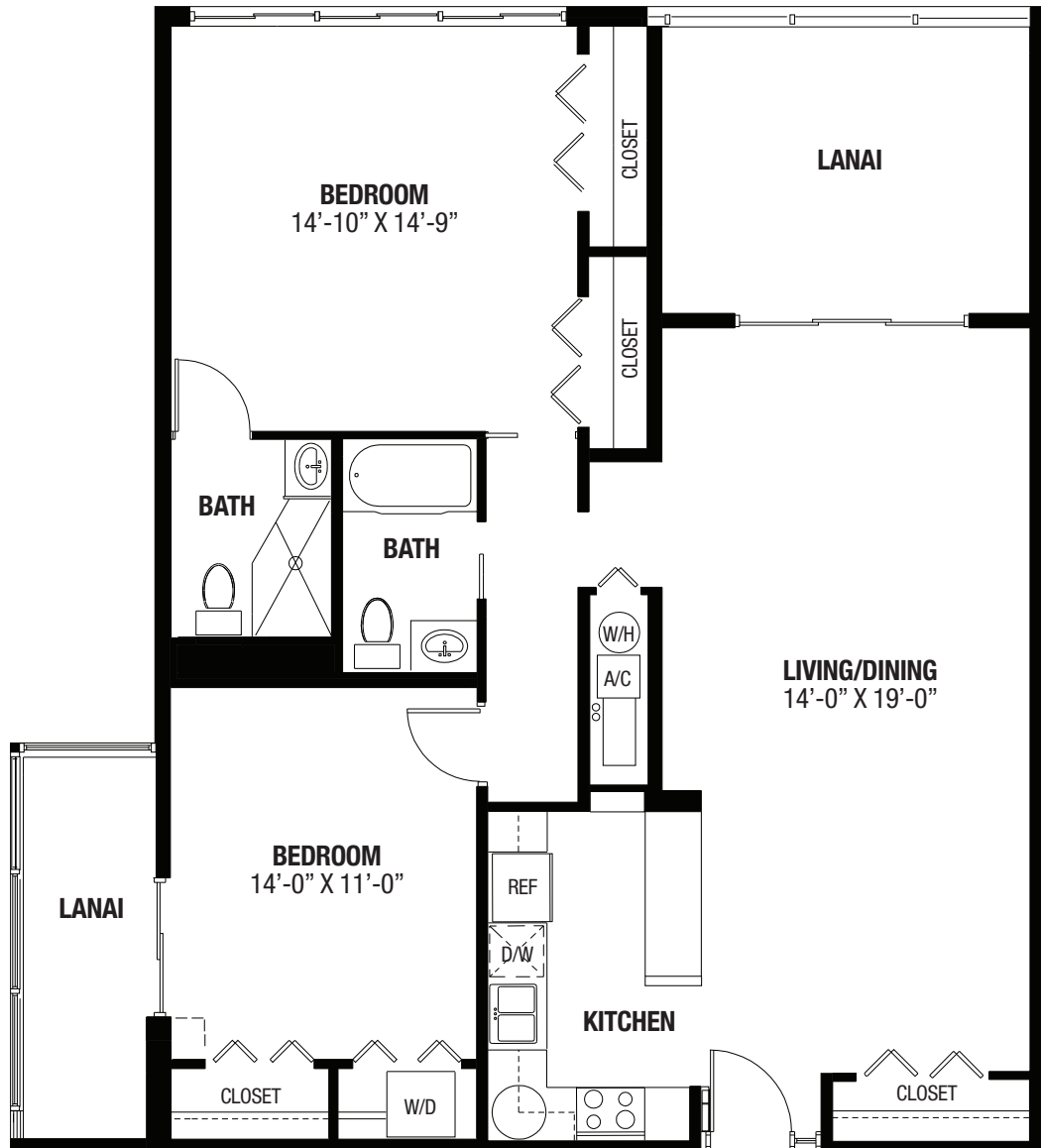


## Dominica, 2 Bed/2 Bath

1,001 square feet excluding lanai

CONTRACTS	ENTRANCE FEE	MONTHLY FEE
<b>A</b> Standard Lifecare Second Person Fee:	\$281,000 to \$399,000 \$13,000	\$2,757 \$721
Standard Lifecare + 75% Refund. Second Person Fee:	\$443,980 to \$630,420 \$20,540	\$2,757 \$721
<b>B</b> Modified Lifecare Second Person Fee:	\$238,850 to \$339,150 \$11,050	\$2,344 \$613
<b>C</b> 100% Refundable Second Person Fee:	\$281,000 to \$399,000 \$13,000	\$2,757 \$721

Dimensions are approximate and floorplans may vary. Additional fees apply to residences that include glass enclosures with increased under-air square footage.



## Fisher, 2 Bed/2 Bath

1,155 square feet excluding lanai

CONTRACTS	ENTRANCE FEE	MONTHLY FEE
<b>A</b> Standard Lifecare Second Person Fee:	\$308,000 to \$389,000 \$13,000	\$3,072 \$721
Standard Lifecare + 75% Refund. Second Person Fee:	\$486,640 to \$614,620 \$20,540	\$3,072 \$721
<b>B</b> Modified Lifecare Second Person Fee:	\$261,800 to \$330,650 \$11,050	\$2,612 \$613
<b>C</b> 100% Refundable Second Person Fee:	\$308,000 to \$389,000 \$13,000	\$3,072 \$721

*Dimensions are approximate and floorplans may vary. Additional fees apply to residences that include glass enclosures with increased under-air square footage.*



## Jamestown, 3 Bed/2 Bath

1,760 square feet excluding lanai

CONTRACTS	ENTRANCE FEE	MONTHLY FEE
<b>A</b> Standard Lifecare	\$506,000 to \$544,000	\$4,435
Second Person Fee:	\$13,000	\$721
Standard Lifecare + 75% Refund.	\$799,480 to \$859,520	\$4,435
Second Person Fee:	\$20,540	\$721
<b>B</b> Modified Lifecare	\$430,100 to \$462,400	\$3,770
Second Person Fee:	\$11,050	\$613
<b>C</b> 100% Refundable	\$506,000 to \$544,000	\$4,435
Second Person Fee:	\$13,000	\$721

*Dimensions are approximate and floorplans may vary. Additional fees apply to residences that include glass enclosures with increased under-air square footage.*

