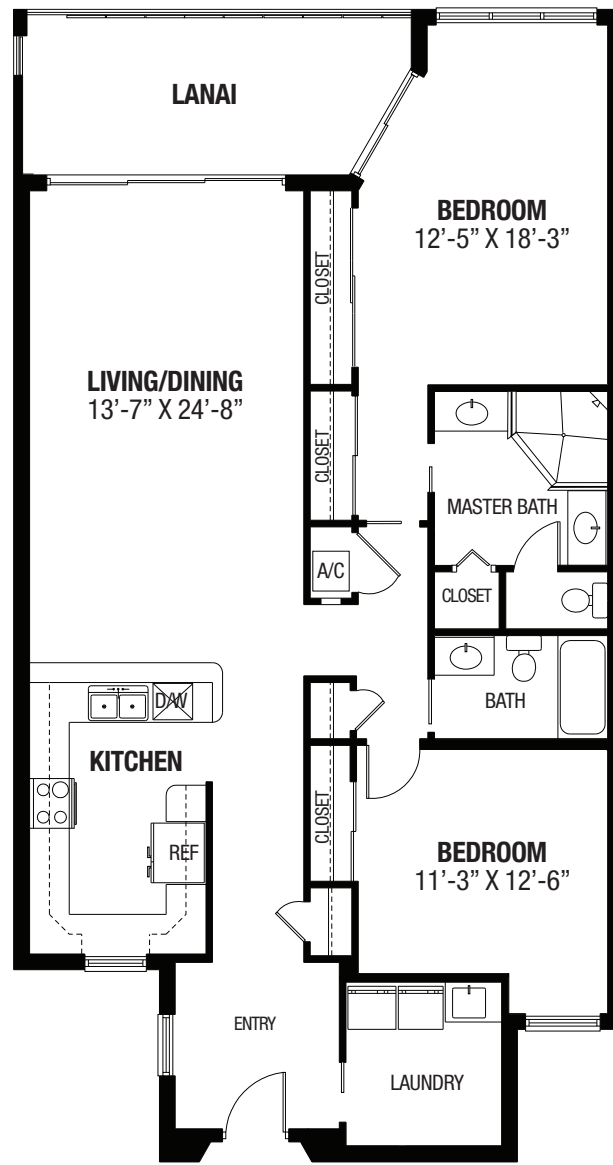


Harbor Court Residences



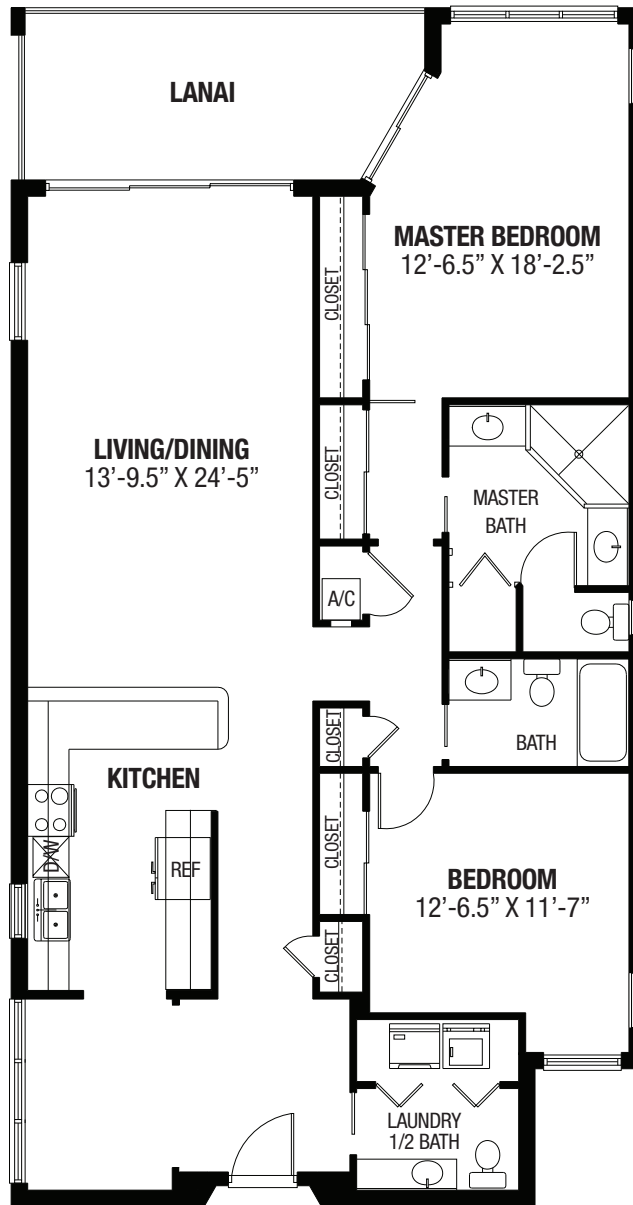


2 Bed/2 Bath Traditional

1,400 square feet excluding lanai

CONTRACTS	ENTRANCE FEE	MONTHLY FEE
A Standard Lifecare Second Person Fee:	\$360,000 to \$402,000 \$13,000	\$3,419 \$721
Standard Lifecare + 75% Refund. Second Person Fee:	\$568,800 to \$635,160 \$20,540	\$3,419 \$721
B Modified Lifecare Second Person Fee:	\$306,000 to \$341,700 \$11,050	\$2,907 \$613
C 100% Refundable Second Person Fee:	\$360,000 to \$402,000 \$13,000	\$3,419 \$721

Dimensions are approximate and floorplans may vary. Additional fees apply to residences that include glass enclosures with increased under-air square footage.

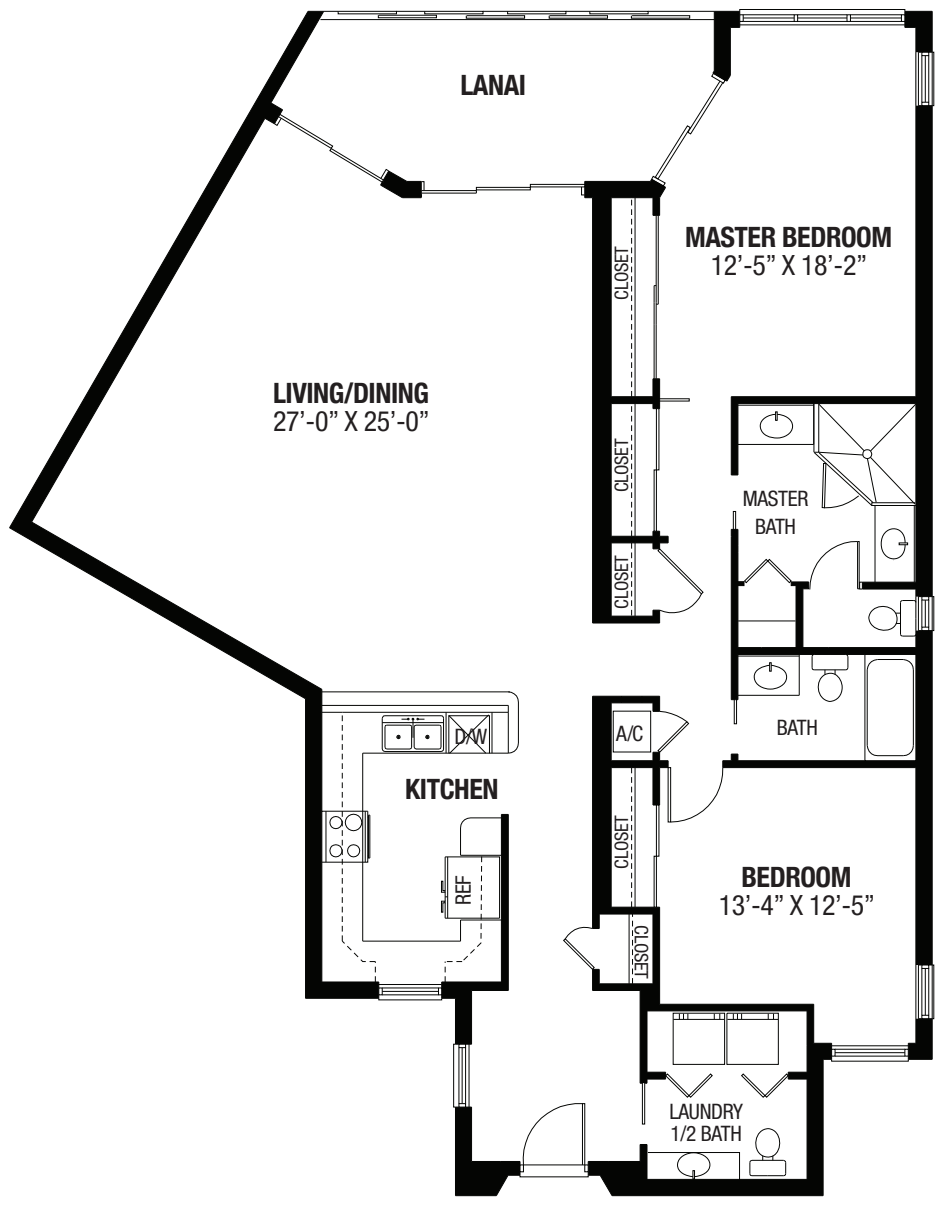


2 Bed/2½ Bath Deluxe

1,470 square feet excluding lanai

CONTRACTS	ENTRANCE FEE	MONTHLY FEE
A Standard Lifecare Second Person Fee:	\$378,000 to \$421,000 \$13,000	\$3,504 \$721
Standard Lifecare + 75% Refund. Second Person Fee:	\$597,240 to \$665,180 \$20,540	\$3,504 \$721
B Modified Lifecare Second Person Fee:	\$321,300 to \$357,850 \$11,050	\$2,979 \$613
C 100% Refundable Second Person Fee:	\$378,000 to \$421,000 \$13,000	\$3,504 \$721

Dimensions are approximate and floorplans may vary. Additional fees apply to residences that include glass enclosures with increased under-air square footage.

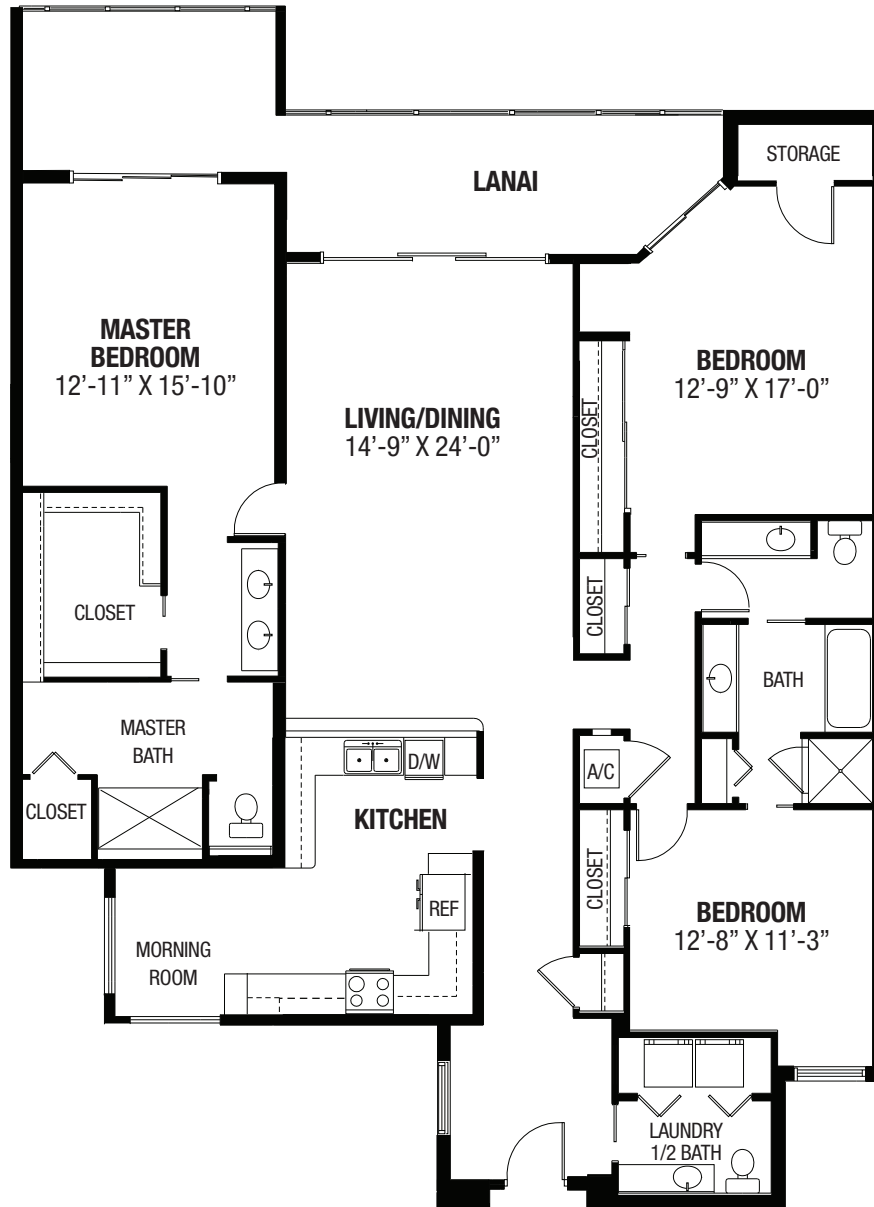


2 Bed/2½ Bath Executive

1,625 square feet excluding lanai

CONTRACTS	ENTRANCE FEE	MONTHLY FEE
A Standard Lifecare Second Person Fee:	\$377,000 to \$450,000 \$13,000	\$3,914 \$721
Standard Lifecare + 75% Refund. Second Person Fee:	\$595,660 to \$711,000 \$20,540	\$3,914 \$721
B Modified Lifecare Second Person Fee:	\$320,450 to \$382,500 \$11,050	\$3,327 \$613
C 100% Refundable Second Person Fee:	\$377,000 to \$450,000 \$13,000	\$3,914 \$721

Dimensions are approximate and floorplans may vary. Additional fees apply to residences that include glass enclosures with increased under-air square footage.

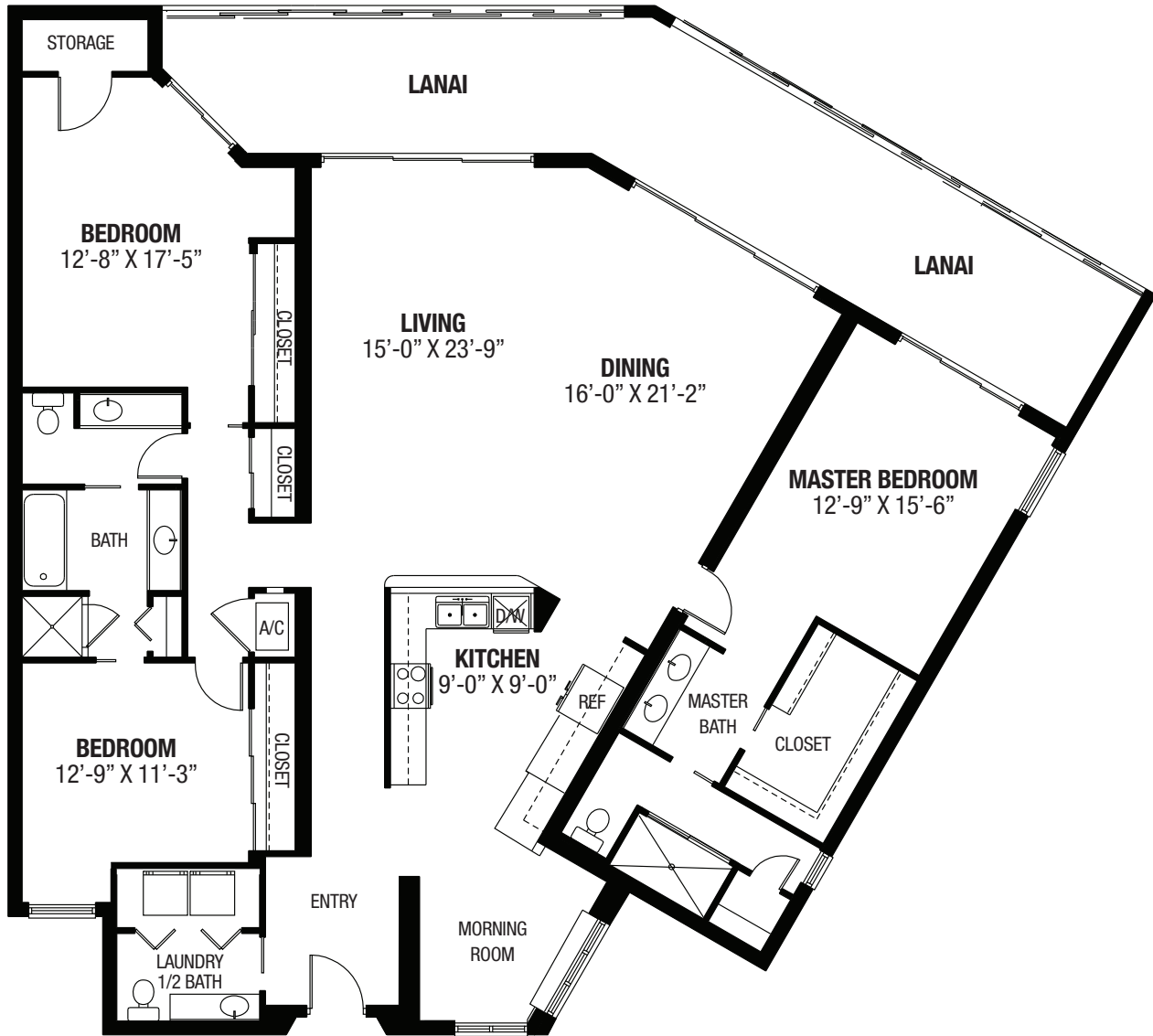


3 Bed / 2½ Bath Traditional

2,000 square feet excluding lanai

CONTRACTS	ENTRANCE FEE	MONTHLY FEE
A Standard Lifecare Second Person Fee:	\$449,000 to \$532,000 \$13,000	\$4,907 \$721
Standard Lifecare + 75% Refund. Second Person Fee:	\$709,420 to \$840,560 \$20,540	\$4,907 \$721
B Modified Lifecare Second Person Fee:	\$381,650 to \$452,200 \$11,050	\$4,171 \$613
C 100% Refundable Second Person Fee:	\$449,000 to \$532,000 \$13,000	\$4,907 \$721

Dimensions are approximate and floorplans may vary. Additional fees apply to residences that include glass enclosures with increased under-air square footage.



3 Bed/ 2½ Bath Executive

2,300 square feet excluding lanai

CONTRACTS	ENTRANCE FEE	MONTHLY FEE
A Standard Lifecare Second Person Fee:	\$534,000 to \$596,000 \$13,000	\$5,512 \$721
Standard Lifecare +75% Refund. Second Person Fee:	\$843,720 to \$941,680 \$20,540	\$5,512 \$721
B Modified Lifecare Second Person Fee:	\$453,900 to \$506,600 \$11,050	\$4,686 \$613
C 100% Refundable Second Person Fee:	\$534,000 to \$596,000 \$13,000	\$5,512 \$721

Dimensions are approximate and floorplans may vary. Additional fees apply to residences that include glass enclosures with increased under-air square footage.