

Garden Residences

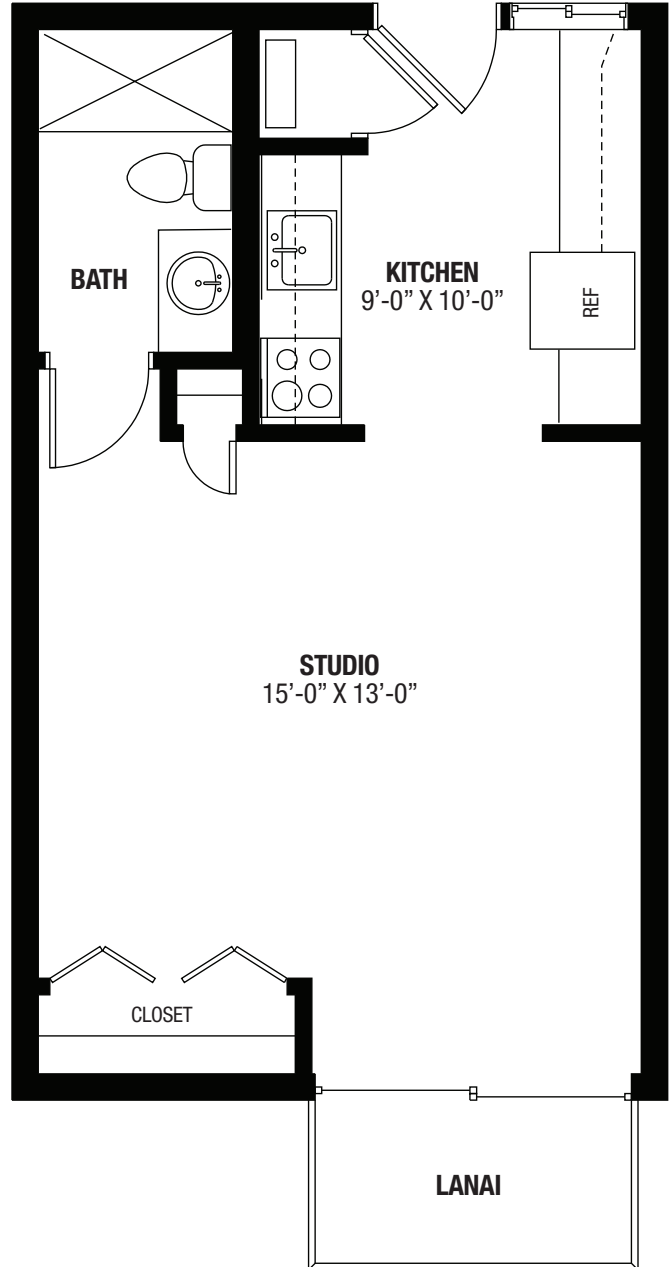


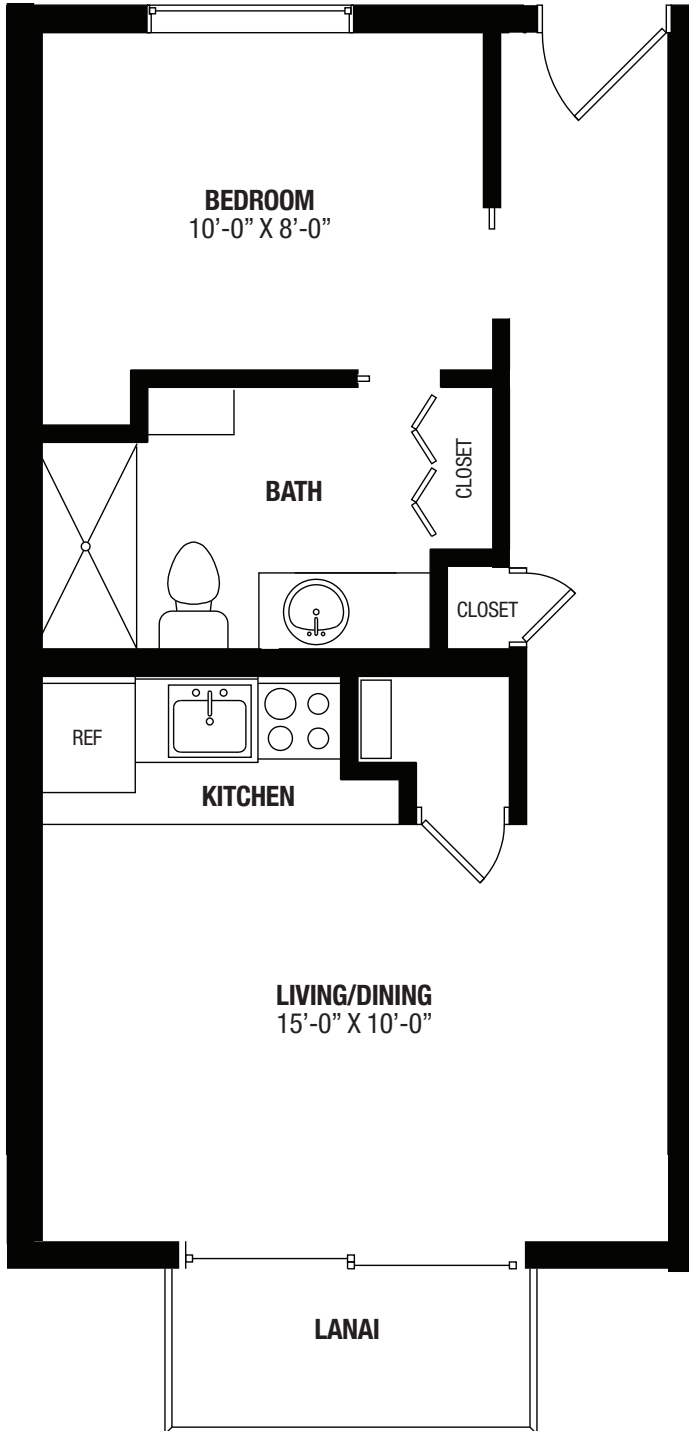
Studio

470 square feet excluding lanai

CONTRACTS	ENTRANCE FEE	MONTHLY FEE
A Standard Lifecare Second Person Fee:	\$117,000 to \$149,000 \$13,000	\$1,560 \$721
Standard Lifecare + 75% Refund. Second Person Fee:	\$184,860 to \$235,420 \$20,540	\$1,560 \$721
B Modified Lifecare Second Person Fee:	\$99,450 to \$126,650 \$11,050	\$1,326 \$613
C 100% Refundable Second Person Fee:	\$117,000 to \$149,000 \$13,000	\$1,560 \$721

*Dimensions are approximate and floorplans may vary.
Additional fees apply to residences that include glass enclosures
with increased under-air square footage.*



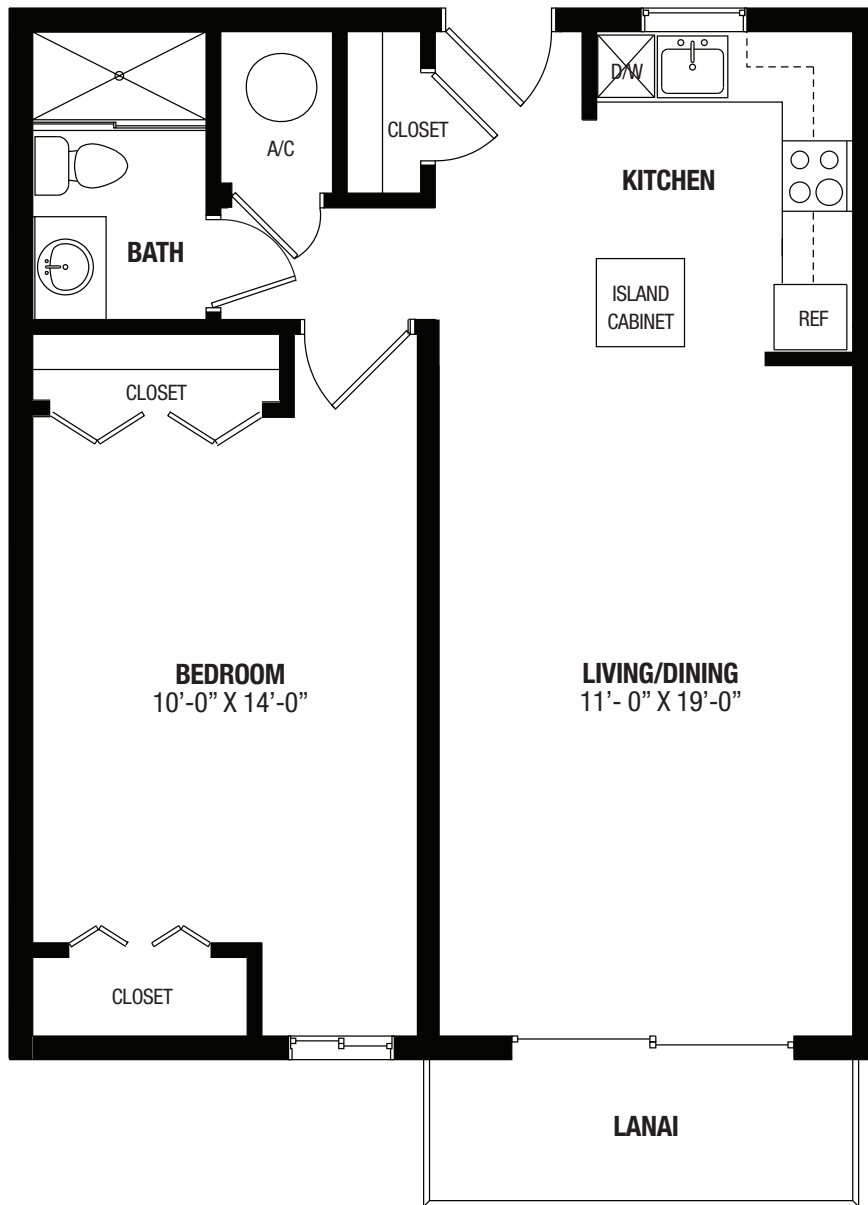


Studio 1 Bed/1 Bath

470 square feet excluding lanai

CONTRACTS	ENTRANCE FEE	MONTHLY FEE
A Standard Lifecare Second Person Fee:	\$132,000 to \$149,000 \$13,000	\$1,560 \$721
Standard Lifecare + 75% Refund. Second Person Fee:	\$208,560 to \$235,420 \$20,540	\$1,560 \$721
B Modified Lifecare Second Person Fee:	\$112,200 to \$126,650 \$11,050	\$1,326 \$613
C 100% Refundable Second Person Fee:	\$132,000 to \$149,000 \$13,000	\$1,560 \$721

*Dimensions are approximate and floorplans may vary.
Additional fees apply to residences that include glass enclosures
with increased under-air square footage.*

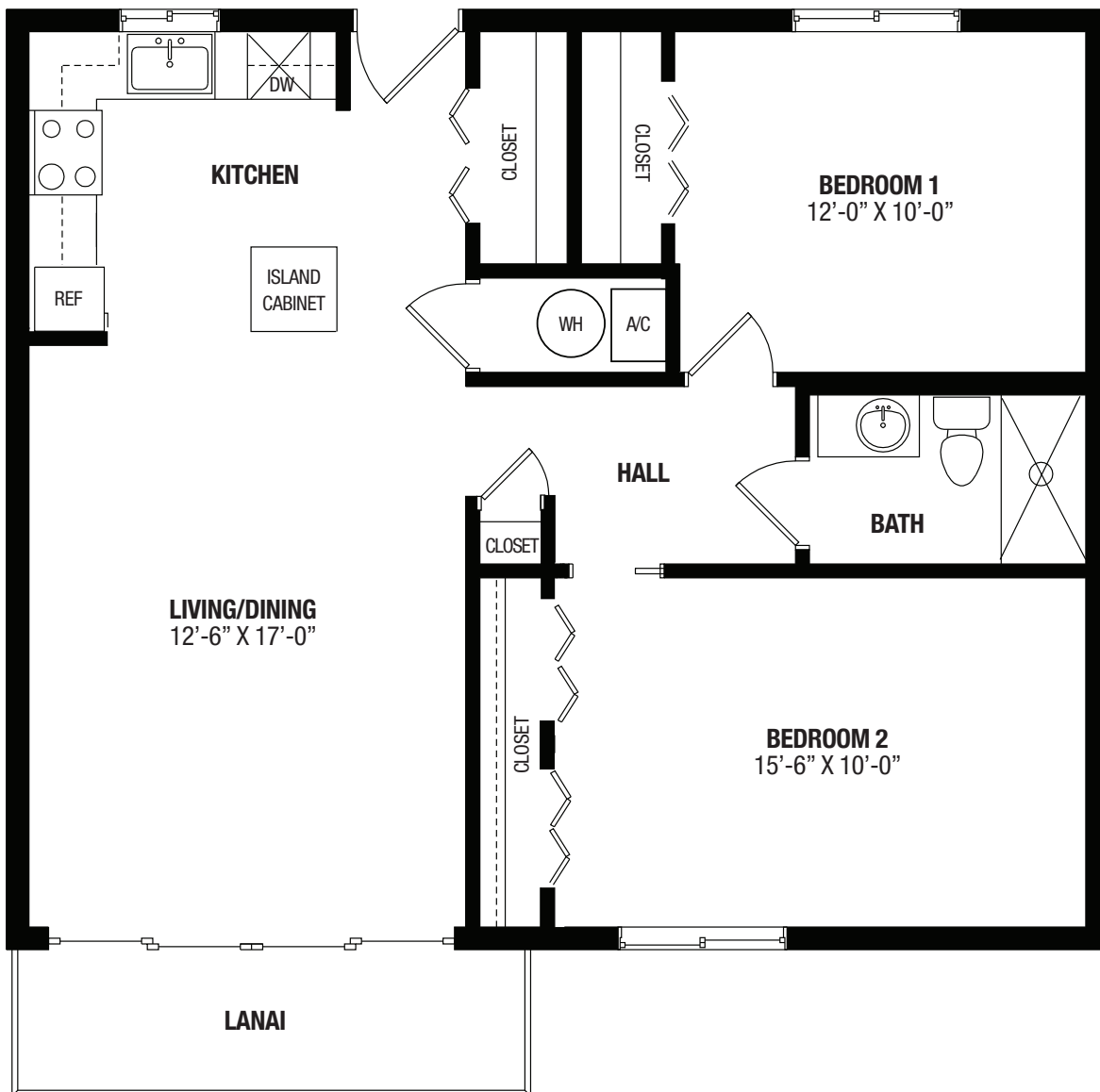


1 Bed/1 Bath Deluxe

704 square feet excluding lanai

CONTRACTS	ENTRANCE FEE	MONTHLY FEE
A Standard Lifecare Second Person Fee:	\$166,000 to \$240,000 \$13,000	\$1,806 \$721
Standard Lifecare + 75% Refund. Second Person Fee:	\$262,280 to \$379,200 \$20,540	\$1,806 \$721
B Modified Lifecare Second Person Fee:	\$141,100 to \$204,000 \$11,050	\$1,536 \$613
C 100% Refundable Second Person Fee:	\$166,000 to \$240,000 \$13,000	\$1,806 \$721

Dimensions are approximate and floorplans may vary. Additional fees apply to residences that include glass enclosures with increased under-air square footage.

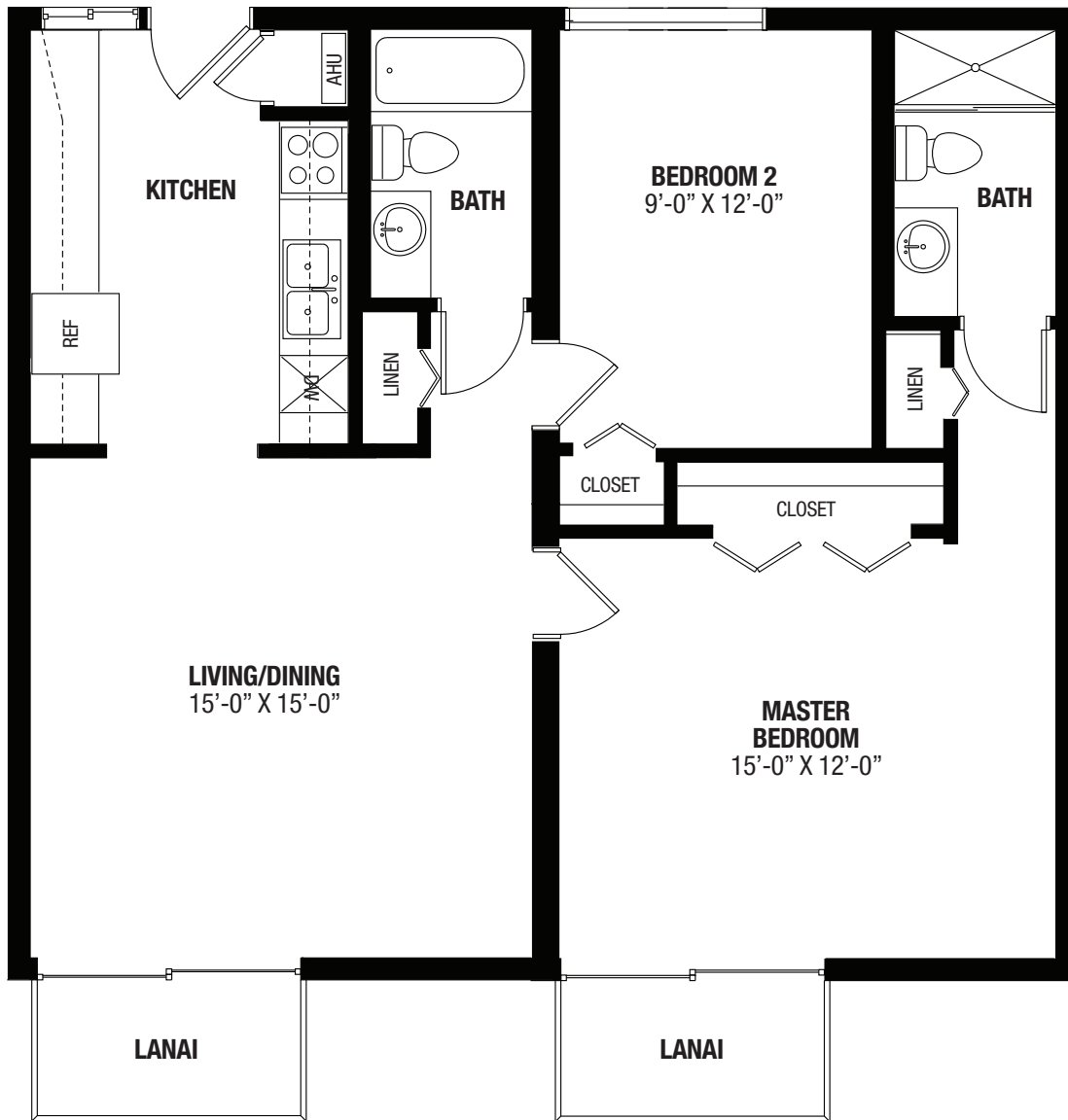


2 Bed/1 Bath

938 square feet excluding lanai

CONTRACTS	ENTRANCE FEE	MONTHLY FEE
A Standard Lifecare Second Person Fee:	\$209,000 to \$261,000 \$13,000	\$2,175 \$721
Standard Lifecare + 75% Refund. Second Person Fee:	\$330,220 to \$412,380 \$20,540	\$2,175 \$721
B Modified Lifecare Second Person Fee:	\$177,650 to \$221,850 \$11,050	\$1,849 \$613
C 100% Refundable Second Person Fee:	\$209,000 to \$261,000 \$13,000	\$2,175 \$721

Dimensions are approximate and floorplans may vary. Additional fees apply to residences that include glass enclosures with increased under-air square footage.

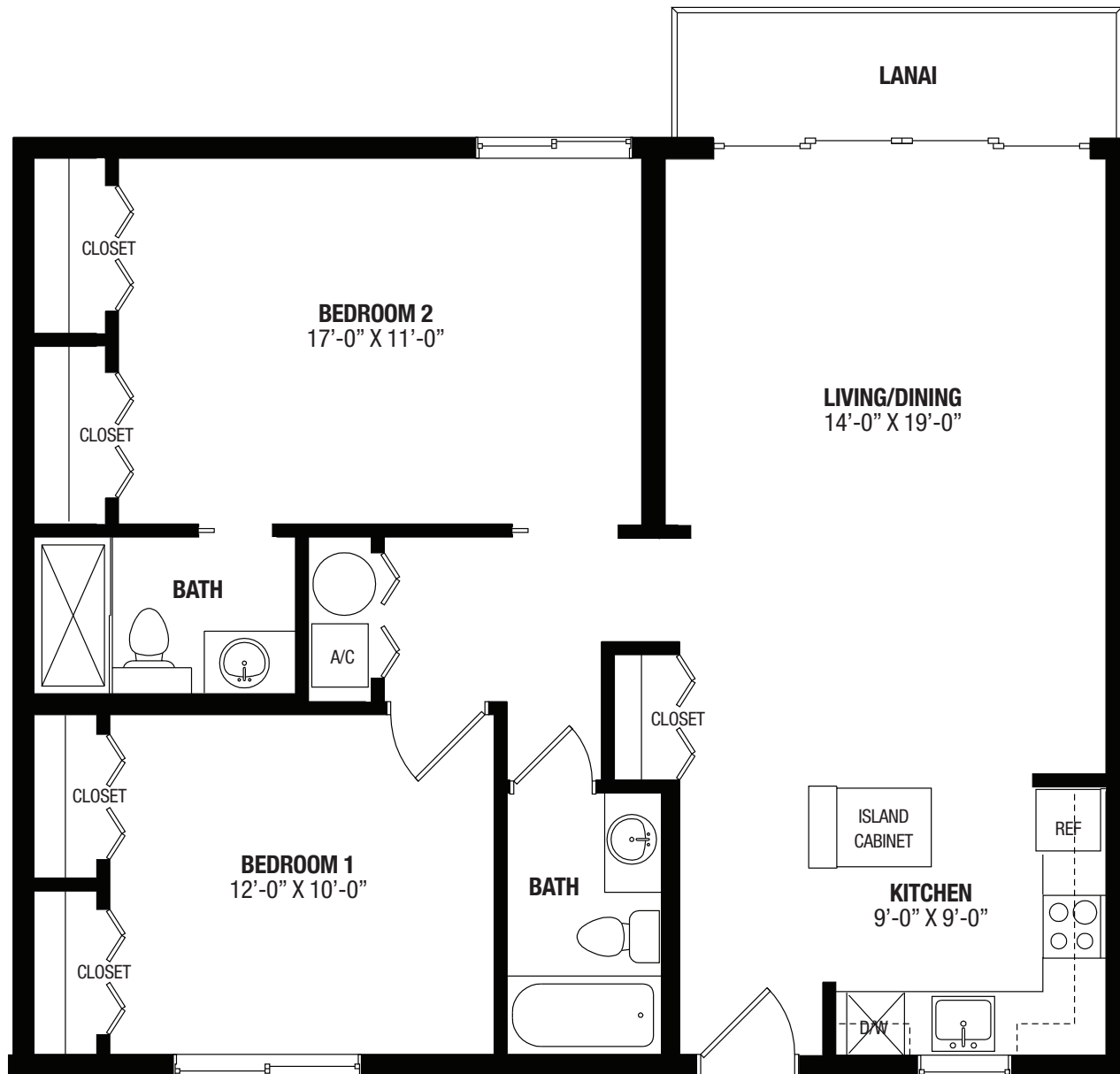


2 Bed/2 Bath

938 square feet excluding lanai

CONTRACTS	ENTRANCE FEE	MONTHLY FEE
A Standard Lifecare Second Person Fee:	\$213,000 to \$255,000 \$13,000	\$2,175 \$721
Standard Lifecare + 75% Refund. Second Person Fee:	\$336,540 to \$402,900 \$20,540	\$2,175 \$721
B Modified Lifecare Second Person Fee:	\$181,050 to \$216,750 \$11,050	\$1,849 \$613
C 100% Refundable Second Person Fee:	\$213,000 to \$255,000 \$13,000	\$2,175 \$721

Dimensions are approximate and floorplans may vary. Additional fees apply to residences that include glass enclosures with increased under-air square footage.



2 Bed/2 Bath Deluxe

1,056 square feet excluding lanai

CONTRACTS	ENTRANCE FEE	MONTHLY FEE
A Standard Lifecare Second Person Fee:	\$245,000 to \$305,000 \$13,000	\$2,757 \$721
Standard Lifecare + 75% Refund. Second Person Fee:	\$387,100 to \$481,900 \$20,540	\$2,757 \$721
B Modified Lifecare Second Person Fee:	\$208,250 to \$259,250 \$11,050	\$2,344 \$613
C 100% Refundable Second Person Fee:	\$245,000 to \$305,000 \$13,000	\$2,757 \$721

Dimensions are approximate and floorplans may vary. Additional fees apply to residences that include glass enclosures with increased under-air square footage.